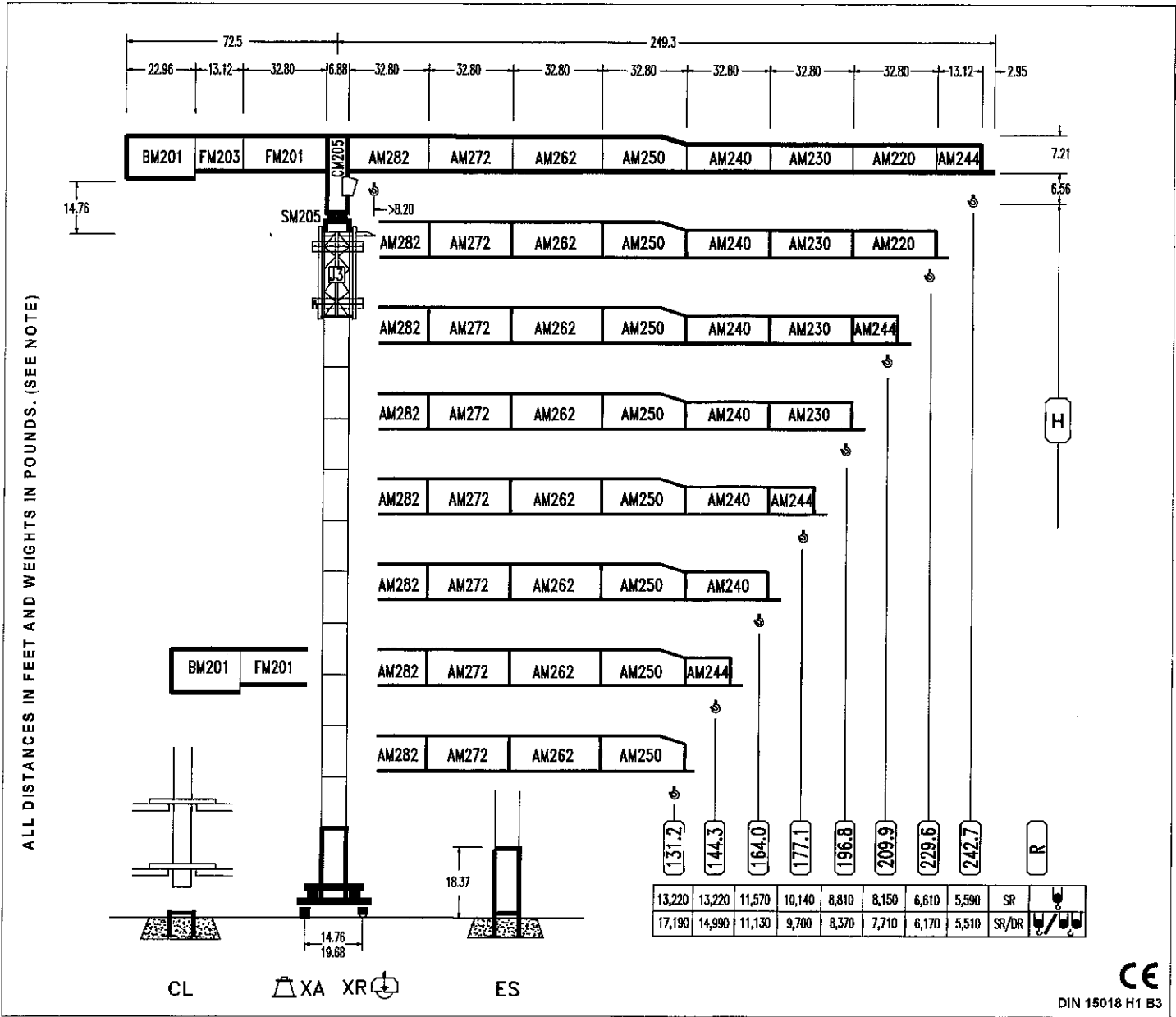




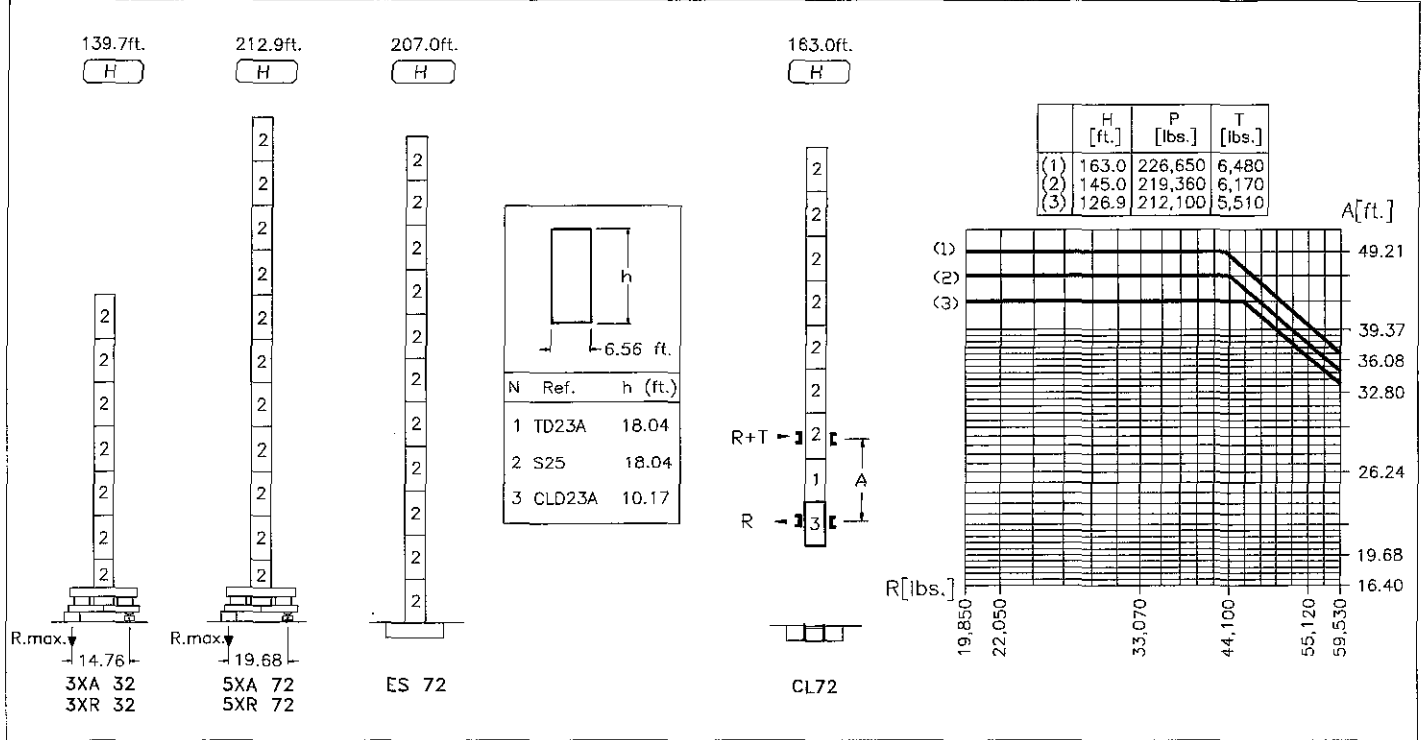
# COMANSA

## LC-2074 26,450 lbs.



DIN 15018 H1 B3

R	R(Cmax)	Cmax	98.4	111.5	131.2	144.3	164.0	177.1	196.8	209.9	229.6	242.7	(ft.)
<b>242.7</b>	SR	123.6	13,220	13,220	13,220	12,370	11,090	9,560	8,730	7,700	7,120	6,380	5,590 (lbs.)
	SR/DR	65.9	26,450	16,770	14,500	11,980	10,690	9,140	8,310	7,270	6,690	5,940	5,510 (lbs.)
<b>229.6</b>	SR	127.2	13,220	13,220	13,220	12,790	11,470	9,890	9,040	7,970	7,380	6,610 (lbs.)	(lbs.)
	SR/DR	67.9	26,450	17,320	14,990	12,390	11,060	9,470	8,610	7,540	6,940	6,170 (lbs.)	(lbs.)
<b>209.9</b>	SR	138.4	13,220	13,220	13,220	13,220	12,610	10,890	9,960	8,810	8,160 (lbs.)	(lbs.)	(lbs.)
	SR/DR	73.4	26,450	19,000	16,470	13,640	12,190	10,470	9,530	8,370	7,720 (lbs.)	(lbs.)	(lbs.)
<b>196.8</b>	SR	138.4	13,220	13,220	13,220	13,220	12,630	10,910	9,980	8,820 (lbs.)	(lbs.)	(lbs.)	(lbs.)
	SR/DR	73.4	26,450	19,020	16,480	13,650	12,200	10,480	9,540	8,380 (lbs.)	(lbs.)	(lbs.)	(lbs.)
<b>177.1</b>	SR	140.4	13,220	13,220	13,220	13,220	12,830	11,080	10,140 (lbs.)	(lbs.)	(lbs.)	(lbs.)	(lbs.)
	SR/DR	74.4	26,450	19,310	16,740	13,870	12,400	10,650	9,700 (lbs.)	(lbs.)	(lbs.)	(lbs.)	(lbs.)
<b>164.0</b>	SR	145.9	13,220	13,220	13,220	13,220	13,220	11,570 (lbs.)	(lbs.)	(lbs.)	(lbs.)	(lbs.)	(lbs.)
	SR/DR	77.4	26,450	20,130	17,460	14,480	12,950	11,130 (lbs.)	(lbs.)	(lbs.)	(lbs.)	(lbs.)	(lbs.)
<b>144.3</b>	SR	144.3	13,220	13,220	13,220	13,220	13,220	(lbs.)	(lbs.)	(lbs.)	(lbs.)	(lbs.)	(lbs.)
	SR/DR	87.2	26,450	23,160	20,120	16,720	14,990 (lbs.)	(lbs.)	(lbs.)	(lbs.)	(lbs.)	(lbs.)	(lbs.)
<b>131.2</b>	SR	131.2	13,220	13,220	13,220	(lbs.)	(lbs.)	(lbs.)	(lbs.)	(lbs.)	(lbs.)	(lbs.)	(lbs.)
	SR/DR	89.5	26,450	23,790	20,670	17,200 (lbs.)	(lbs.)	(lbs.)	(lbs.)	(lbs.)	(lbs.)	(lbs.)	(lbs.)



<b>CS3-4.5</b>	<b>*CFU-5.5</b>
<b>7.2 hp (5.4 kW)</b>	<b>7.3 hp (5.5 kW)</b>
51.1 ft./min 157.4 ft./min 314.9 ft./min	0 ⇄ 262 ft./min

<b>GR-8.0</b>	
<b>3 x 57.8 ft.lbs. (3 x 80 Nm)</b>	
0 ⇄ 0.14	
0.14 ⇄ 0.35	rpm
0.35 ⇄ 0.7	

<b>TRA-6.5</b>	<b>*TRA-6.5VC</b>
<b>2 x 46.9 ft.lbs. (2 x 65 Nm)</b>	
0 ⇄ 65.6 ft./min	

<b>ES3-33-30</b>				
<b>53.6 hp (40 kW)</b>				
		I	II	III
SR	ft./min	23.6	94.4	188.9
	lbs.	13,220	13,220	6,610
DR	ft./min	11.8	47.2	94.4
	lbs.	26,450	26,450	13,220

<b>*EFU4-45-30</b>	<b>60 hp (45 kW)</b>
SR	DR

<b>*EEA3-60-30</b>				
<b>96.5 hp (72 kW)</b>				
	I	II	III	
SR	ft./min	11.8 ⇄ 177.1	19.6 ⇄ 291.3	47.2 ⇄ 708.6
	lbs.	13,220	6,610	2,640
DR	ft./min	5.9 ⇄ 88.5	9.8 ⇄ 145.6	23.6 ⇄ 354.3
	lbs.	26,450	13,220	5,280

<b>*EPL2-45-30</b>						
<b>72.4 hp (54 kW)</b>						
		I	II	III	IV	V
SR	ft./min	19.6	39.3	149.6	224.4	299.2
	lbs.	13,220	13,220	13,220	6,610	6,610
DR	ft./min	9.8	19.6	74.8	110.2	149.6
	lbs.	26,450	26,450	26,450	13,220	13,220

Tensión de alimentación Operating voltage	<b>480 V</b> <b>3 ph</b> <b>60 Hz</b>
Sección de cable Cross section of cable	<b>AWG n° 0</b> <b>(3.5 x 50 mm²)</b>

OPCIONAL  
OPTIONAL

**\***

<b>R. máx.</b> En servicio In operation	<b>3XR32 ..... 233,500 lbs.</b>
	<b>5XR72 ..... 250,500 lbs.</b>
<b>R. máx.</b> Fuera de servicio Out of service	<b>3XR32 ..... 199,100 lbs.</b>
	<b>5XR72 ..... 331,400 lbs.</b>

**NOTE: ALL ORIGINAL WEIGHTS AND MEASUREMENTS ARE METRIC AND ABOVE ARE ROUNDED-OFF CONVERSIONS OF SAME. FOR EXACT WEIGHTS AND MEASUREMENTS, SEE SHEET DS.9736.07**



**Construcciones Metálicas COMANSA S. A.**  
 Polígono Industrial de Areta  
 E-31620 Huarte-Pamplona.- SPAIN  
 Tel.: (34) 948 335 020 - Fax: (34) 948 330 810  
 e-mail: info@comansa.com